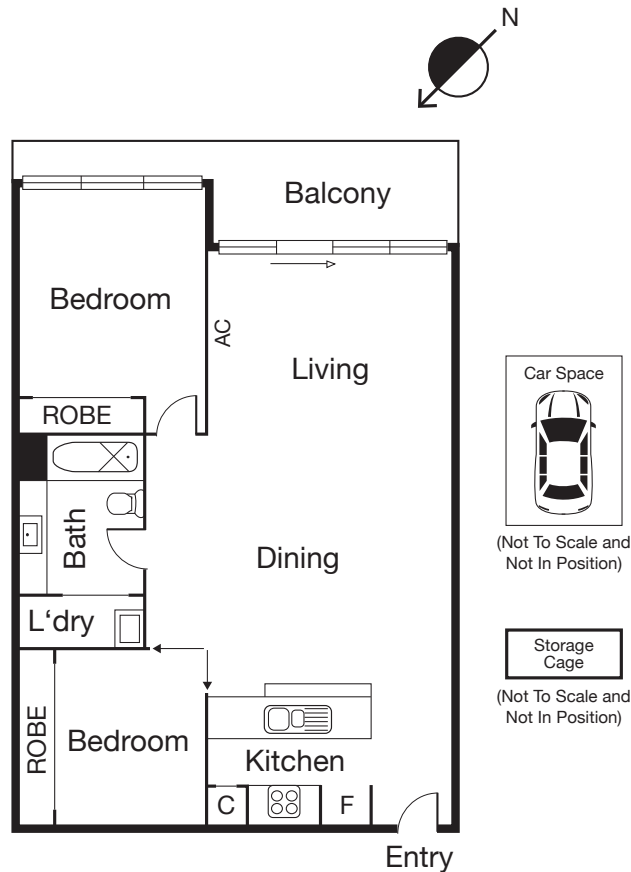


PORT MELBOURNE 307E/126 Rouse Street



CAYZER

PORT MELBOURNE 307E/126 Rouse Street



BAYVIEW BEAUTY

- Exemplary quality of finishes throughout
- First class facilities and amenities
- Underground car park with storage cage

Bayview is fast becoming one of the most in demand buildings in Port Melbourne. Ultra-convenient location at the beach end of Bay Street.

Comprising open plan living, striking timber floors, statement light fittings and adjoining balcony. Stone benches coupled with gas cooking in the kitchen, light and bright modern bathroom and spacious bedrooms with built in robes. Features a brand-new gym, lap pool, spa & sauna, central courtyard gardens and diligent on-site manager.

 2  1  1

FOR SALE

Inspection As advertised or by appointment

Contact Jordan Gravestain 0448 250 193
Jason De Stefano 0413 292 666

Mel Ref 57 B4


LIVE AUCTIONS



Interactive Floorplan

CAYZER

Albert Park 330 Montague Street 03 9699 5999
Port Melbourne 370 Bay Street 03 9646 0812

cayzer.com.au

Every care has been taken to ensure the information contained in this document is accurate. The diagrams/plans are a representation only and are not to scale. Interested parties should seek independent legal advice. Cayzer Real Estate Pty Ltd does not accept any responsibility or liability as a result of the information provided in this document. If your property is currently listed for sale with another agent, please disregard this notice. | Cayzer Real Estate Pty Ltd | CRE20401-073 090718